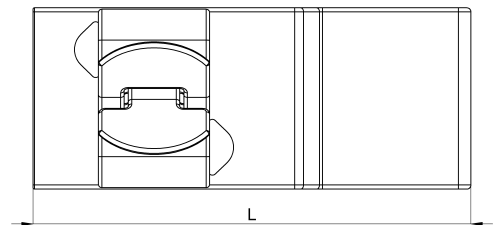
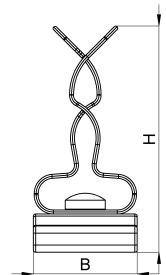


## Technical data sheet

1025-168C / HSE2 3 - 12

(Status as of 15/01/2024)



### Design features

Dimensions (L / B / H) (mm)	31.5 x 13.1 x 28.3
Shield diameter min/max (mm)	3 / 12
Strain relief	Yes
Weight (kg)	0,005
Part	shield clamp
Material	galvanized spring steel
Mounting type	sheet edge 2mm

## Order designation

Designation	Order No.	Description	PU
HSE2 3 - 12	1025-168C	HEBOCLIP Uno for 10 x 2mm busbar or sheet metal edge, with shield clamp Multi, shield diameter 3 - 12 mm	PU = 10 pcs.