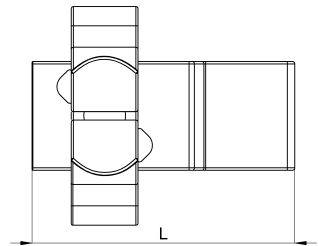
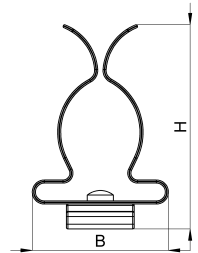


## Technical data sheet

1025-166C / HSE2 17 - 30

(Status as of 15/01/2024)



### Design features

Dimensions (L / B / H) (mm)	31.5 x 26.1 x 39.2
Shield diameter min/max (mm)	17 / 30
Weight (kg)	0,005
Part	shield clamp
Material	galvanized spring steel
Mounting type	sheet edge 2mm

## Order designation

Designation	Order No.	Description	PU
HSE2 17 - 30	1025-166C	HEBOCLIP Uno for 10 x 2mm busbar or sheet metal edge, with shield clamp, shield diameter 17 - 30 mm	PU = 10 pcs.