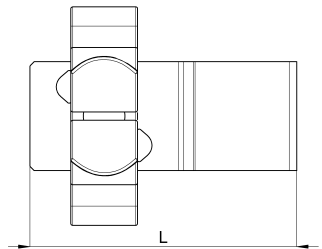
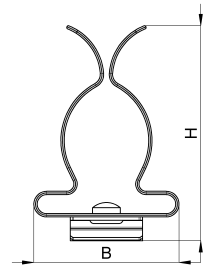


## Technical data sheet

1025-146C / HSE1,5 17 - 30

(Status as of 15/01/2024)



### Design features

Dimensions (L / B / H) (mm)	31.9 x 26.1 x 38.7
Shield diameter min/max (mm)	17 / 30
Weight (kg)	0,011
Part	shield clamp
Material	galvanized spring steel
Mounting type	sheet edge 1.5mm

## Order designation

Designation	Order No.	Description	PU
HSE1,5 17 - 30	1025-146C	HEBOCLIP Uno for 10 x 1,5mm busbar or sheet metal edge, without strain relief, with shield clamp, shield diameter 17 - 30 mm	PU = 10 pcs.