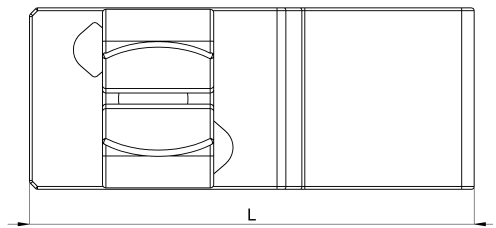
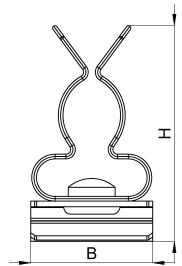


## Technical data sheet

1025-143C / HSE1,5 6 - 8

(Status as of 15/01/2024)



### Design features

Dimensions (L / B / H) (mm)	31.9 x 13.1 x 22.9
Shield diameter min/max (mm)	6 / 8
Weight (kg)	0,008
Part	shield clamp
Material	galvanized spring steel
Mounting type	sheet edge 1.5mm

## Order designation

Designation	Order No.	Description	PU
HSE1,5 6 - 8	1025-143C	HEBOCLIP Uno for 10 x 1,5mm busbar or sheet metal edge, without strain relief, with shield clamp, shield diameter 6 - 8 mm	PU = 10 pcs.