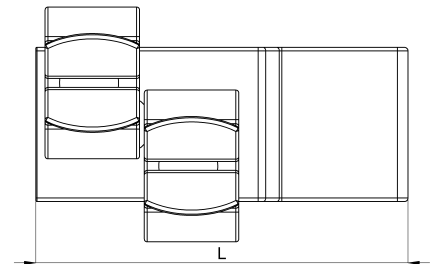
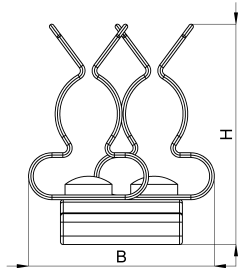


Technical data sheet

1025-063C / HSD2 6 - 8

(Status as of 15/01/2024)



Design features

Dimensions (L / B / H) (mm)	31.5 x 19.8 x 23.5
Shield diameter min/max (mm)	6 / 8
Strain relief	Yes
Weight (kg)	0,007
Part	shield clamp
Material	galvanized spring steel
Mounting type	sheet edge 2mm

Order designation

Designation	Order No.	Description	PU
HSD2 6 - 8	1025-063C	HEBOCLIP Duo for 10 x2mm busbar or sheet metal edge, with 2 shield clamps, shield diameter 6 - 8mm	PU = 10 pcs.