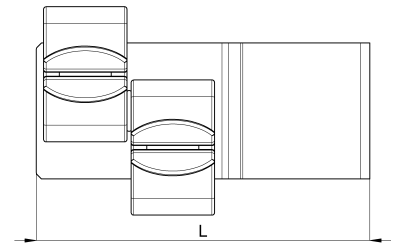
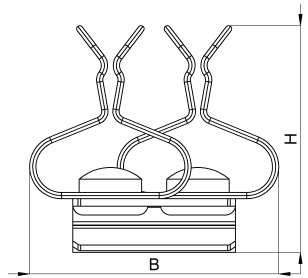


Technical data sheet

1025-041C / HSD1,5 1,5 - 3

(Status as of 15/01/2024)



Design features

Dimensions (L / B / H) (mm)	32.1 x 19.9 x 18.2
Shield diameter min/max (mm)	1.5 / 3
Weight (kg)	0,010
Part	shield clamp
Material	galvanized spring steel
Mounting type	sheet edge 1.5mm

Order designation

Designation	Order No.	Description	PU
HSD1,5 1,5 - 3	1025-041C	HEBOCLIP Duo for 10 x1,5mm busbar or sheet metal edge, without strain relief, with 2 shield clamps, shield diameter 1,5 - 3 mm	PU = 10 pcs.